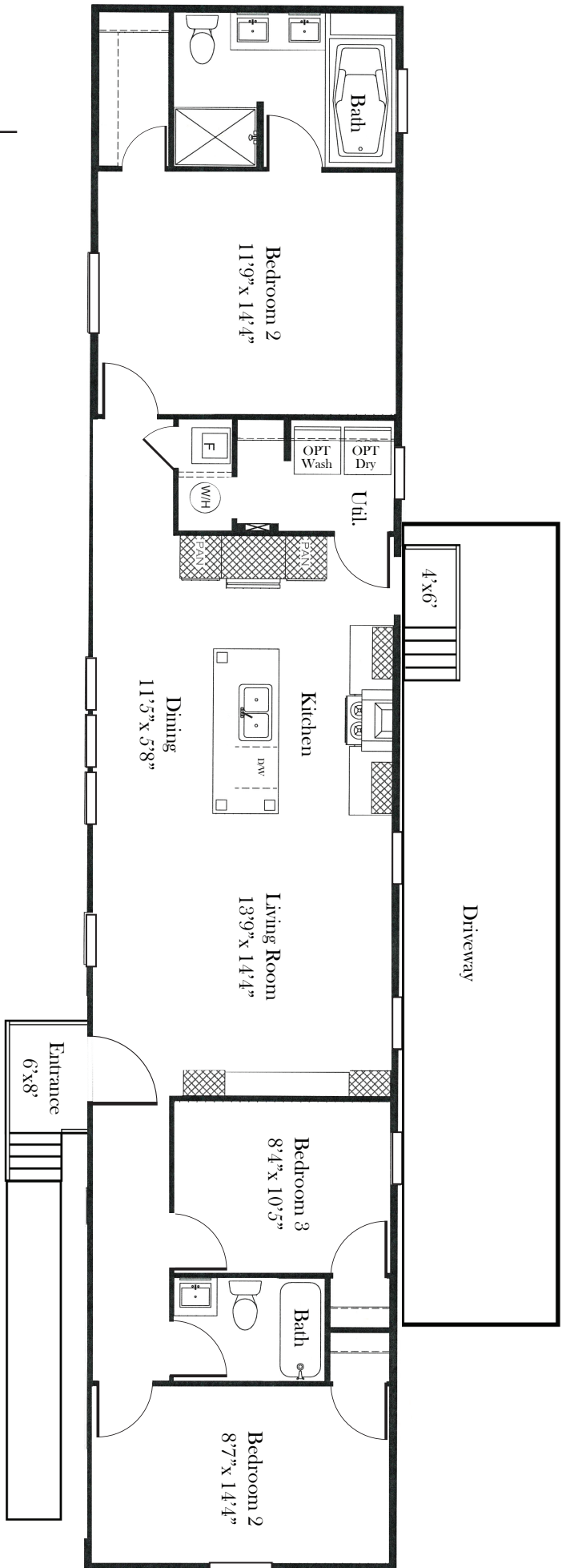


# SANDIA PLAN 926 - STANDARD

3 Bedroom, 2 Bath, 2-Car Carport

Total (approx) 1,216 sq.ft.



## MEADOWBROOK

A Thesman Community

7401 San Pedro Drive, N.E., Albuquerque, NM 871  
(505) 821-1717

web: [thesman.com/meadowbrook](http://thesman.com/meadowbrook)  
email: [meadowbrook@thesman.com](mailto:meadowbrook@thesman.com)